

# Discharge Measurement Summary

**Site name** Sodhouse6  
**Site number** 06  
**Operator(s)** RBrannan  
**File name** Sodhouse6\_20230705-162126.ft  
**Comment**

<b>Start time</b>	7/5/2023 3:09 PM	<b>Sensor type</b>	Top Setting
<b>End time</b>	7/5/2023 4:16 PM	<b>Handheld serial number</b>	FT2H2219029
<b>Start location latitude</b>	43.250	<b>Probe serial number</b>	FT2P2219014
<b>Start location longitude</b>	-118.859	<b>Probe firmware</b>	1.30
<b>Calculations engine</b>	FlowTracker2	<b>Handheld software</b>	1.7

<b># Stations</b>	<b>Avg interval (s)</b>	<b>Total discharge (m<sup>3</sup>/s)</b>
25	40	0.0374

<b>Total width (m)</b>	<b>Total area (m<sup>2</sup>)</b>	<b>Wetted Perimeter (m)</b>
3.170	1.21331	3.557

<b>Mean SNR (dB)</b>	<b>Mean depth (m)</b>	<b>Mean velocity (m/s)</b>
36	0.383	0.0308

<b>Mean temp (°C)</b>	<b>Max depth (m)</b>	<b>Max velocity (m/s)</b>
22.491	0.579	0.0562

Discharge Uncertainty		
Category	ISO	IVE
Accuracy	1.0%	1.0%
Depth	0.1%	1.5%
Velocity	0.6%	3.3%
Width	0.1%	0.1%
Method	1.2%	
# Stations	2.0%	
Overall	2.6%	3.8%

<b>Discharge equation</b>	Mid Section
<b>Discharge uncertainty</b>	IVE
<b>Discharge reference</b>	Rated

Data Collection Settings	
<b>Salinity</b>	0.000 PSS-78
<b>Temperature</b>	-
<b>Sound speed</b>	-
<b>Mounting correction</b>	0.000 %

## Summary overview

No changes were made to this file  
Quality control warnings



# Discharge Measurement Summary

**Site name** Sodhouse6  
**Site number** 06  
**Operator(s)** RBrannan  
**File name** Sodhouse6\_20230705-162126.ft  
**Comment**

## Station Warning Settings

**Station discharge OK**

Station discharge < 5.00%

**Station discharge caution**

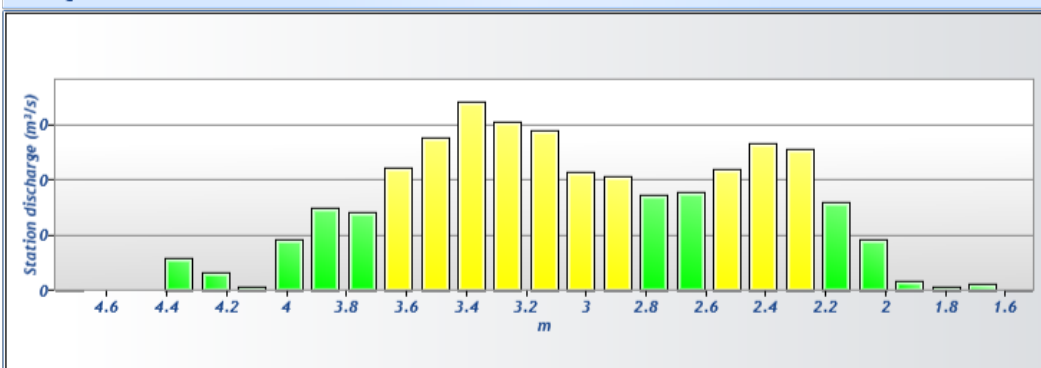
5.00% >= Station discharge < 10.00%

**Station discharge warning**

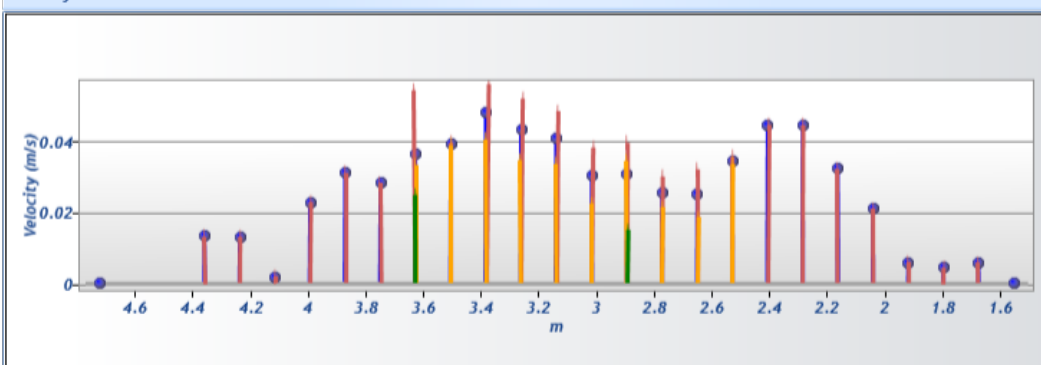
Station discharge >= 10.00%



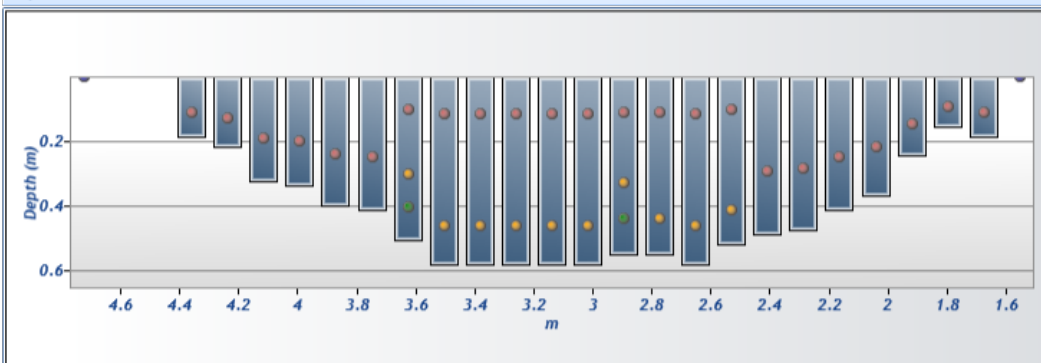
Discharge chart

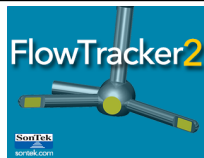


Velocity chart



Depth chart

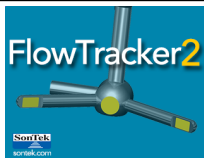




# Discharge Measurement Summary

**Site name** Sodhouse6  
**Site number** 06  
**Operator(s)** RBrannan  
**File name** Sodhouse6\_20230705-162126.ft  
**Comment**

Measurement results													
St#	Time	Location (m)	Method	Depth (m)	%Depth	Measured Depth (m)	Samples	Velocity (m/s)	Correction	Mean Velocity (m/s)	Area (m²)	Flow (m³/s)	%Q
0	3:09 PM	1.554	None	0.000	0.0000	0.000	0	0.0000		0.0059	0.00000	0.0000	0.00 ✓
1	3:11 PM	1.676	0.6	0.183	0.6000	0.110	80	0.0059	1.0000	0.0059	0.02230	0.0001	0.35 ✓
2	3:15 PM	1.798	0.6	0.152	0.6000	0.091	80	0.0047	1.0000	0.0047	0.01858	0.0001	0.23 ✓
3	3:21 PM	1.920	0.6	0.244	0.6000	0.146	80	0.0060	1.0000	0.0060	0.02973	0.0002	0.47 ✓
4	3:23 PM	2.042	0.6	0.366	0.6000	0.219	80	0.0210	1.0000	0.0210	0.04459	0.0009	2.50 ✓
5	3:25 PM	2.164	0.6	0.411	0.6000	0.247	80	0.0323	1.0000	0.0323	0.05017	0.0016	4.33 ✓
6	3:27 PM	2.286	0.6	0.472	0.6000	0.283	80	0.0447	1.0000	0.0447	0.05760	0.0026	6.89 ✓
7	3:29 PM	2.408	0.6	0.488	0.6000	0.293	80	0.0448	1.0000	0.0448	0.05946	0.0027	7.11 ✓
8	3:31 PM	2.530	0.2/0.8	0.518	0.2000	0.104	80	0.0357	1.0000	0.0347	0.06317	0.0022	5.86 ✓
8	3:31 PM	2.530	0.2/0.8	0.518	0.8000	0.415	80	0.0337	1.0000	0.0347	0.06317	0.0022	5.86 ✓
9	3:35 PM	2.652	0.2/0.8	0.579	0.2000	0.116	80	0.0322	1.0000	0.0254	0.07061	0.0018	4.79 ✓
9	3:35 PM	2.652	0.2/0.8	0.579	0.8000	0.463	80	0.0186	1.0000	0.0254	0.07061	0.0018	4.79 ✓
10	3:37 PM	2.774	0.2/0.8	0.549	0.2000	0.110	80	0.0302	1.0000	0.0258	0.06689	0.0017	4.61 ✓
10	3:37 PM	2.774	0.2/0.8	0.549	0.8000	0.439	80	0.0214	1.0000	0.0258	0.06689	0.0017	4.61 ✓
11	3:41 PM	2.896	0.2/0.6/0.8	0.549	0.2000	0.110	80	0.0397	1.0000	0.0310	0.06689	0.0021	5.54 ✓
11	3:41 PM	2.896	0.2/0.6/0.8	0.549	0.6000	0.329	80	0.0346	1.0000	0.0310	0.06689	0.0021	5.54 ✓
11	3:41 PM	2.896	0.2/0.6/0.8	0.549	0.8000	0.439	80	0.0150	1.0000	0.0310	0.06689	0.0021	5.54 ✓
12	3:45 PM	3.018	0.2/0.8	0.579	0.2000	0.116	80	0.0383	1.0000	0.0304	0.07061	0.0021	5.73 ✓
12	3:45 PM	3.018	0.2/0.8	0.579	0.8000	0.463	80	0.0224	1.0000	0.0304	0.07061	0.0021	5.73 ✓
13	3:49 PM	3.139	0.2/0.8	0.579	0.2000	0.116	80	0.0486	1.0000	0.0411	0.07061	0.0029	7.77 ✓
13	3:49 PM	3.139	0.2/0.8	0.579	0.8000	0.463	80	0.0337	1.0000	0.0411	0.07061	0.0029	7.77 ✓
14	3:52 PM	3.261	0.2/0.8	0.579	0.2000	0.116	80	0.0521	1.0000	0.0435	0.07061	0.0031	8.20 ✓
14	3:52 PM	3.261	0.2/0.8	0.579	0.8000	0.463	80	0.0348	1.0000	0.0435	0.07061	0.0031	8.20 ✓
15	3:54 PM	3.383	0.2/0.8	0.579	0.2000	0.116	80	0.0562	1.0000	0.0484	0.07061	0.0034	9.13 ✓
15	3:54 PM	3.383	0.2/0.8	0.579	0.8000	0.463	80	0.0406	1.0000	0.0484	0.07061	0.0034	9.13 ✓
16	3:56 PM	3.505	0.2/0.8	0.579	0.2000	0.116	80	0.0398	1.0000	0.0394	0.07061	0.0028	7.43 ✓
16	3:56 PM	3.505	0.2/0.8	0.579	0.8000	0.463	80	0.0389	1.0000	0.0394	0.07061	0.0028	7.43 ✓
17	3:59 PM	3.627	0.2/0.6/0.8	0.503	0.2000	0.101	80	0.0544	1.0000	0.0365	0.06132	0.0022	5.98 ✓
17	3:59 PM	3.627	0.2/0.6/0.8	0.503	0.6000	0.302	80	0.0334	1.0000	0.0365	0.06132	0.0022	5.98 ✓
17	3:59 PM	3.627	0.2/0.6/0.8	0.503	0.8000	0.402	80	0.0248	1.0000	0.0365	0.06132	0.0022	5.98 ✓
18	4:03 PM	3.749	0.6	0.411	0.6000	0.247	80	0.0283	1.0000	0.0283	0.05017	0.0014	3.80 ✓
19	4:05 PM	3.871	0.6	0.396	0.6000	0.238	80	0.0312	1.0000	0.0312	0.04831	0.0015	4.03 ✓
20	4:07 PM	3.993	0.6	0.335	0.6000	0.201	80	0.0229	1.0000	0.0229	0.04088	0.0009	2.51 ✓
21	4:08 PM	4.115	0.6	0.320	0.6000	0.192	80	0.0020	1.0000	0.0020	0.03902	0.0001	0.21 ✓
22	4:10 PM	4.237	0.6	0.213	0.6000	0.128	80	0.0131	1.0000	0.0131	0.02601	0.0003	0.91 ✓
23	4:13 PM	4.359	0.6	0.183	0.6000	0.110	80	0.0134	1.0000	0.0134	0.04459	0.0006	1.60 ✓
24	4:16 PM	4.724	None	0.000	0.0000	0.000	0	0.0000		0.0134	0.00000	0.0000	0.00 ✓

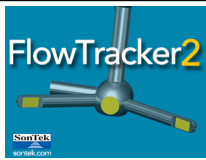


# Discharge Measurement Summary

**Site name** Sodhouse6  
**Site number** 06  
**Operator(s)** RBrannan  
**File name** Sodhouse6\_20230705-162126.ft  
**Comment**

Quality Control Settings	
Maximum depth change	50.00%
Maximum spacing change	100.00%
SNR threshold	10 dB
Standard error threshold	0.0100 m/s
Spike threshold	10.00%
Maximum velocity angle	20.0 deg
Maximum tilt angle	5.0 deg

Quality control warnings							
St#	Time	Location (m)	Method	Depth (m)	%Depth	Measured Depth (m)	Warnings
2	3:15 PM	1.798	0.6	0.152	0.6000	0.091	Large SNR Variation
9	3:35 PM	2.652	0.2/0.8	0.579	0.2000	0.116	Large SNR Variation
9	3:35 PM	2.652	0.2/0.8	0.579	0.8000	0.463	Large SNR Variation
23	4:13 PM	4.359	0.6	0.183	0.6000	0.110	Boundary Interference
24	4:16 PM	4.724	None	0.000	0.0000	0.000	Stn Spacing > QC



# Discharge Measurement Summary

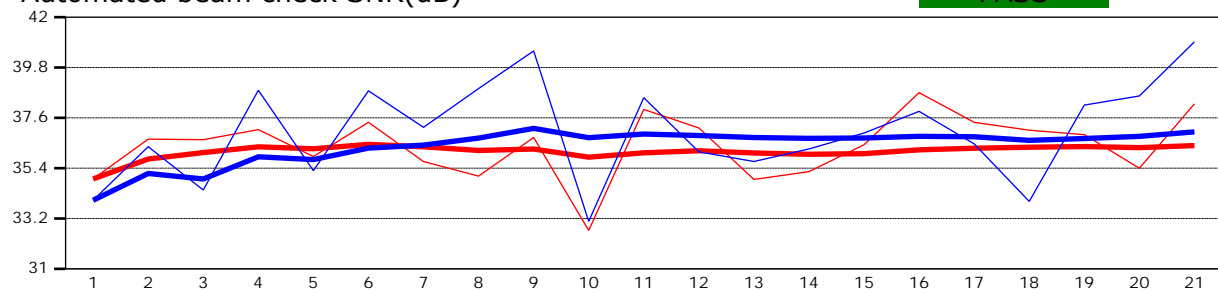
**Site name** Sodhouse6  
**Site number** 06  
**Operator(s)** RBrannan  
**File name** Sodhouse6\_20230705-162126.ft  
**Comment**

<b>Beam 1</b>	
<b>Beam 2</b>	

Automated beam check Start time 7/5/2023 3:08:34 PM

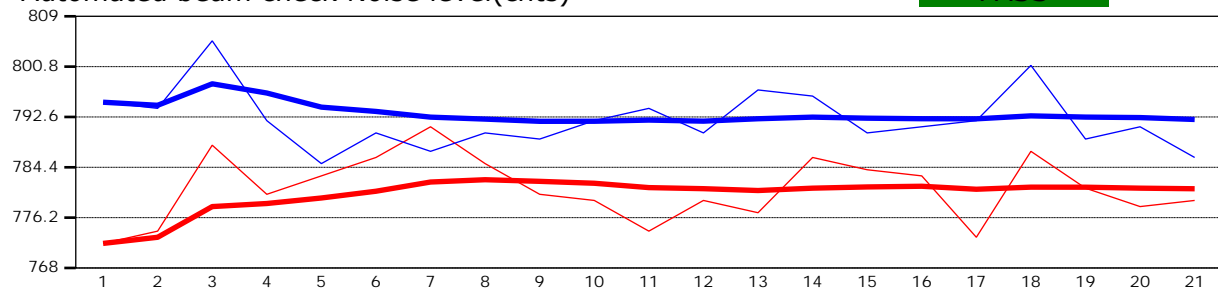
Automated beam check SNR(dB)

PASS



Automated beam check Noise level(cnts)

PASS



## Automated beam check Quality control warnings

No quality control warnings



# Discharge Measurement Summary

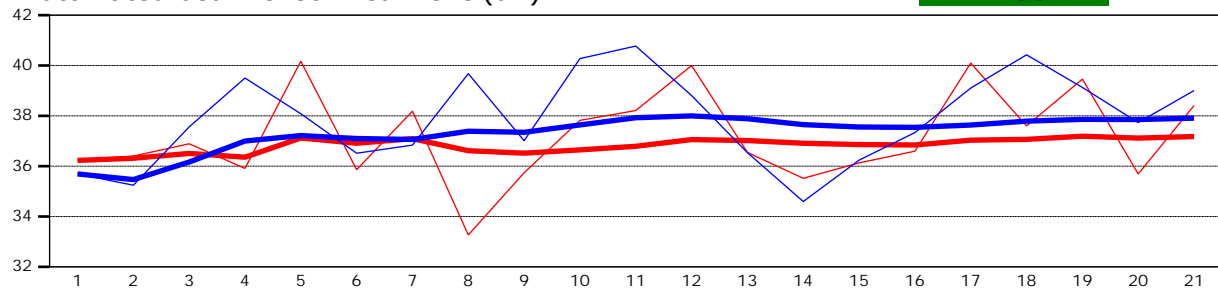
**Site name** Sodhouse6  
**Site number** 06  
**Operator(s)** RBrannan  
**File name** Sodhouse6\_20230705-162126.ft  
**Comment**

<b>Beam 1</b>	
<b>Beam 2</b>	

Automated beam check Start time 7/5/2023 3:08:34 PM

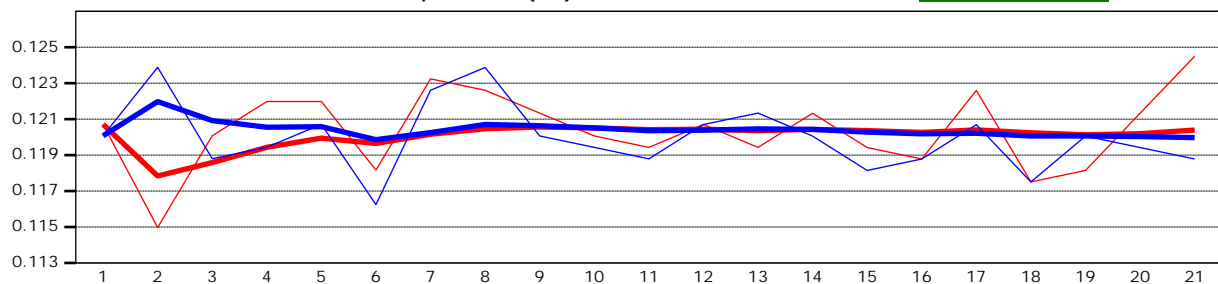
Automated beam check Peak level(dB)

PASS



Automated beam check Peak position(m)

PASS



## Automated beam check Quality control warnings

No quality control warnings